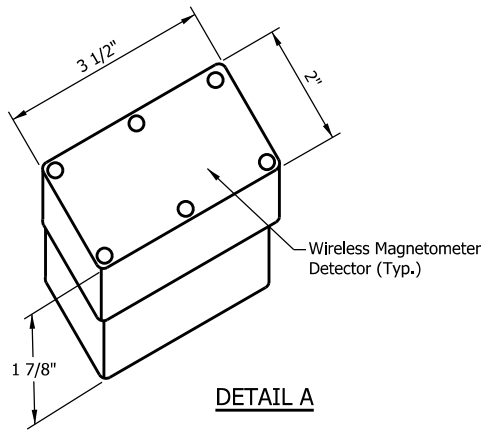


NOTES:

1. The wireless magnetometer detector labeled with a C that is furthest from the stop line shall be programmed to provide vehicle counts. The other wireless magnetometer detectors labeled with an N shall be programmed only to detect vehicle presence.
2. There should be at least 1/4 in. no more than 1/2 in. clearance between the top of the detector and the top of the pavement.

LEGEND

- N = Non-counting
- C = Counting



INDIANA DEPARTMENT OF TRANSPORTATION

WIRELESS VEHICLE DETECTORS
STOP BAR DETECTION ZONE