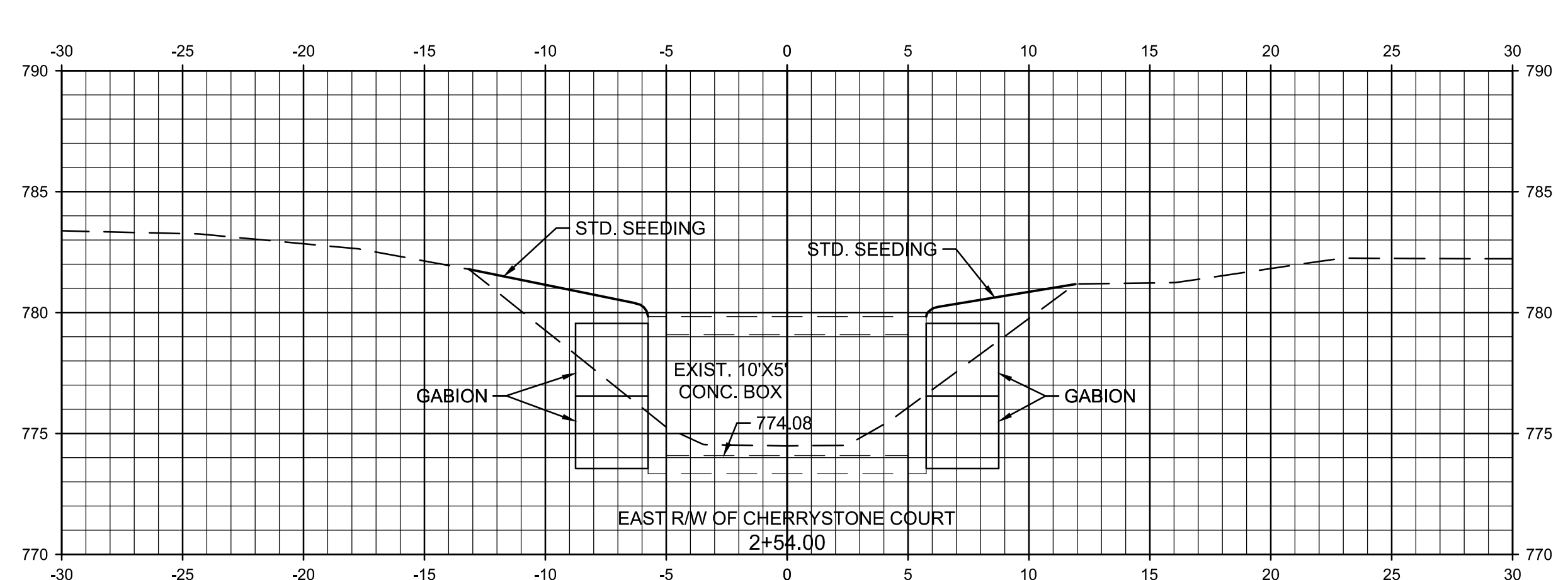
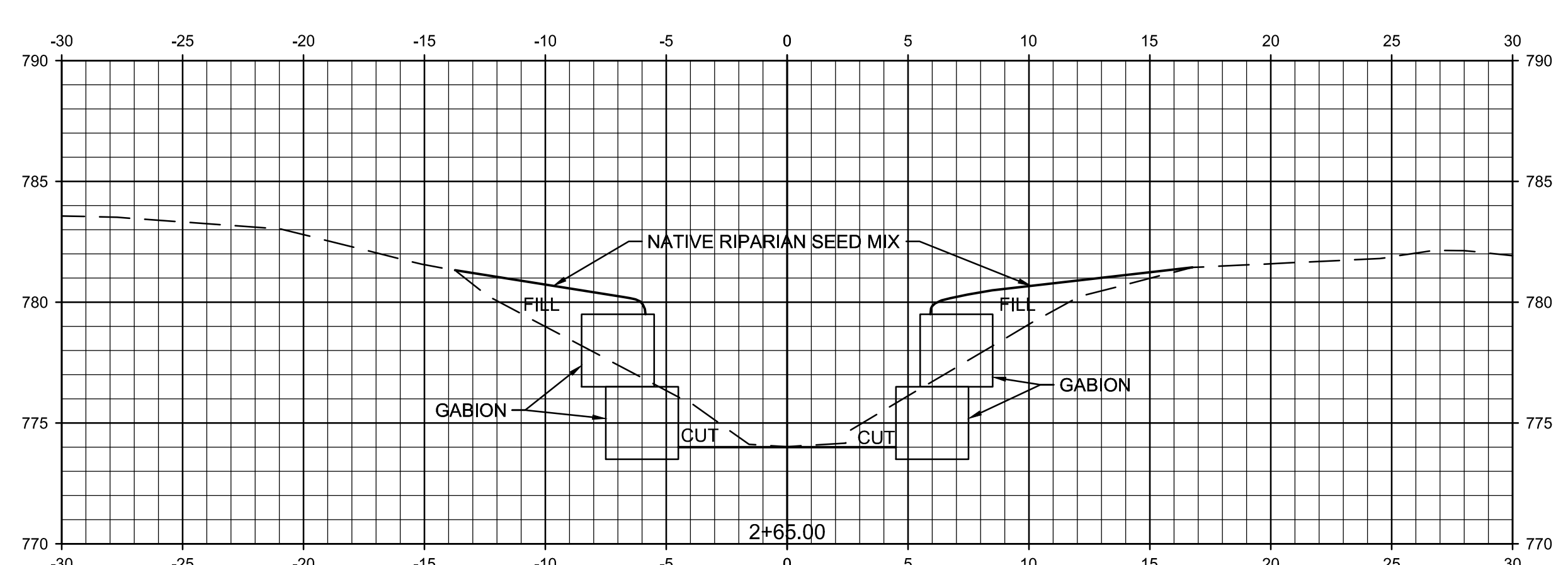
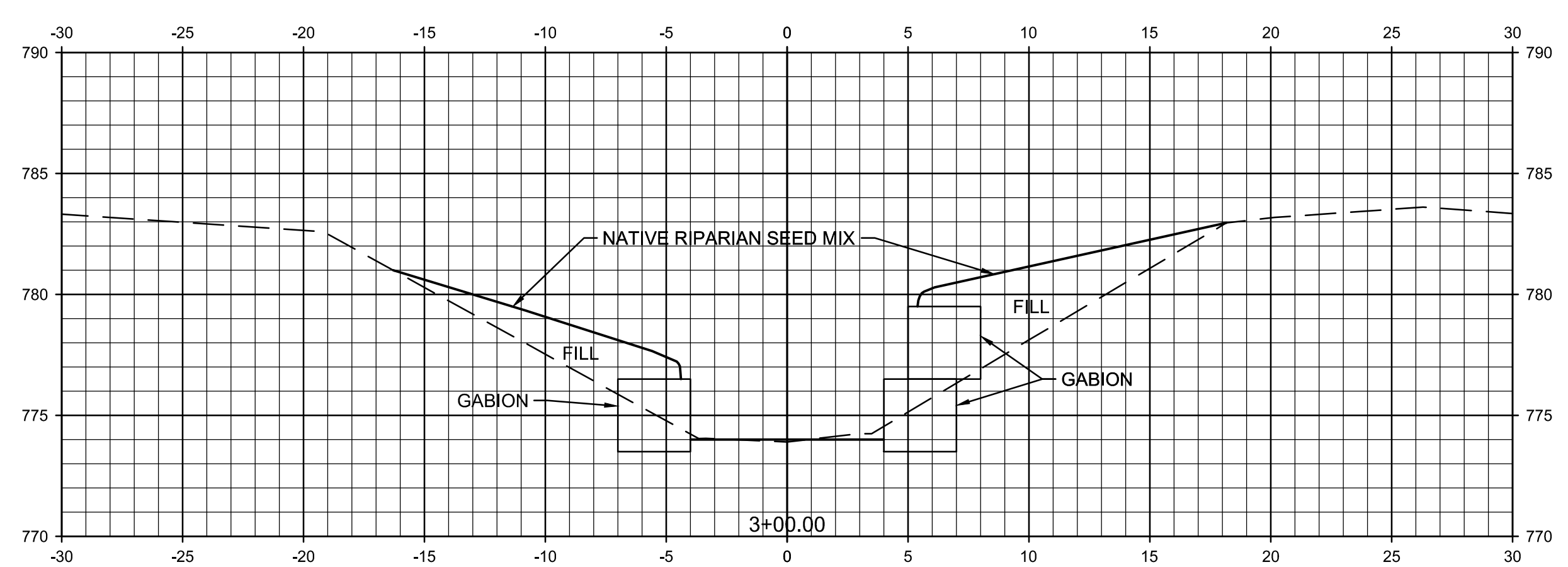
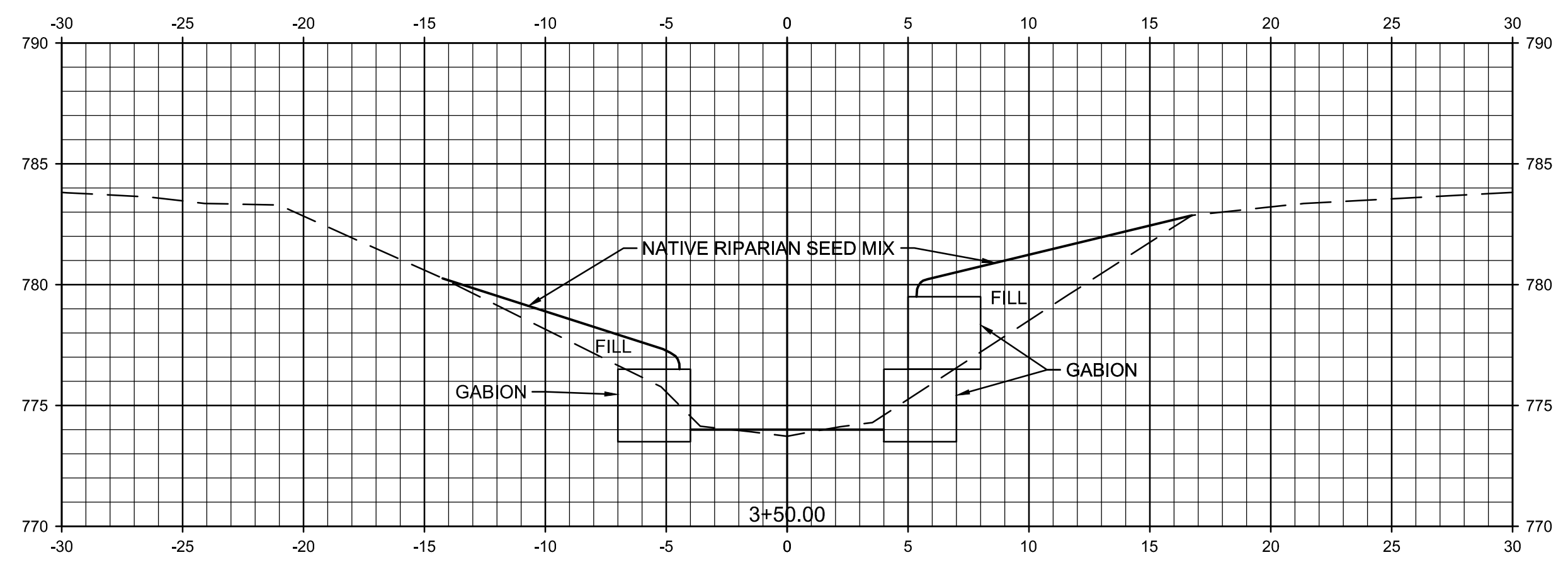


G:\CU WATER RESOURCES\SHARE\STANDARDS & MANUAL\CADD STANDARDS - WORKING\DCS\CADD 5 - DRAFTING CONVENTIONS\XXXX - CADD STANDARDS 2013\DRAWINGS\SHEET DRAWINGS\SHEET TYPE EXHIBIT\EXHIBIT CADD5-3 - CROSS SECTIONS.DWG 3/18/2015 12:45 PM

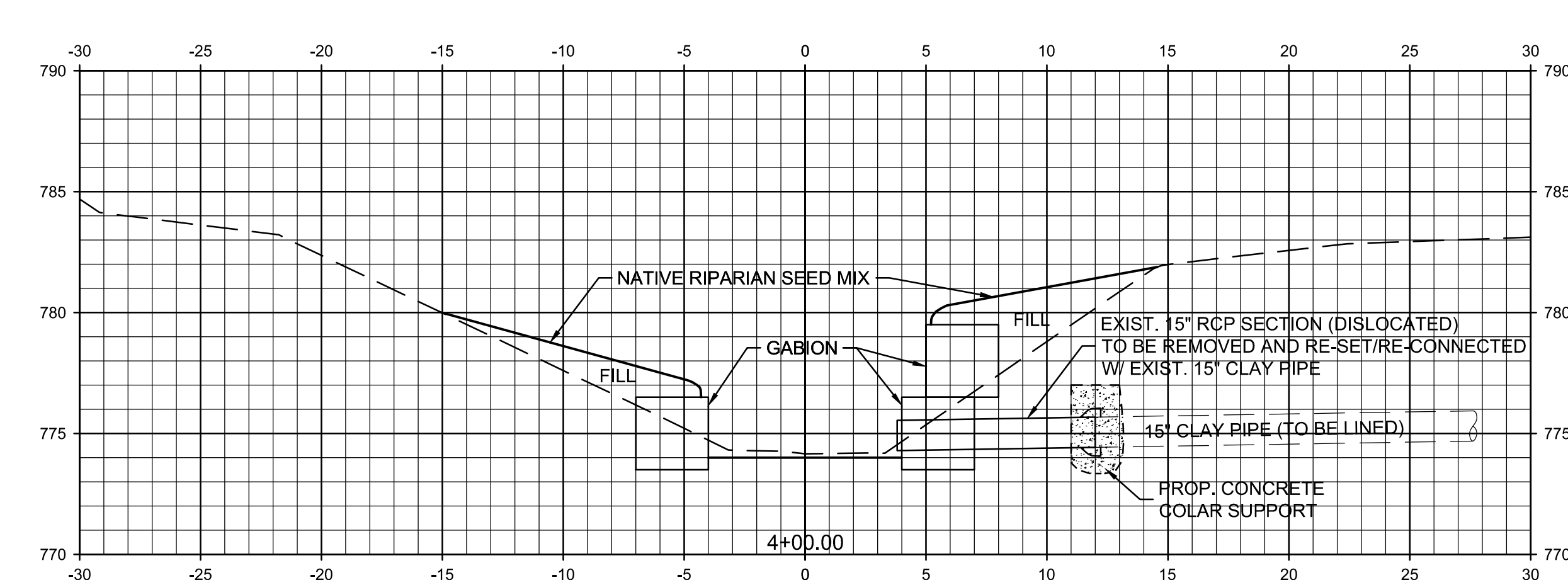
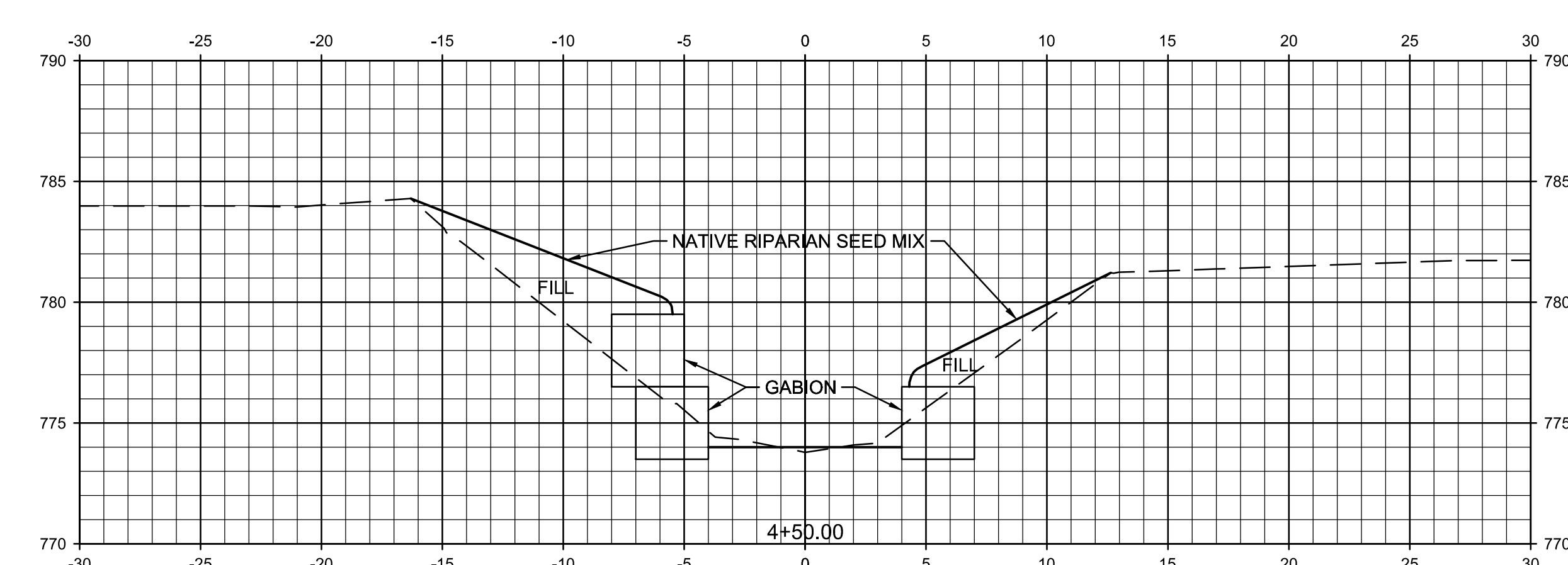
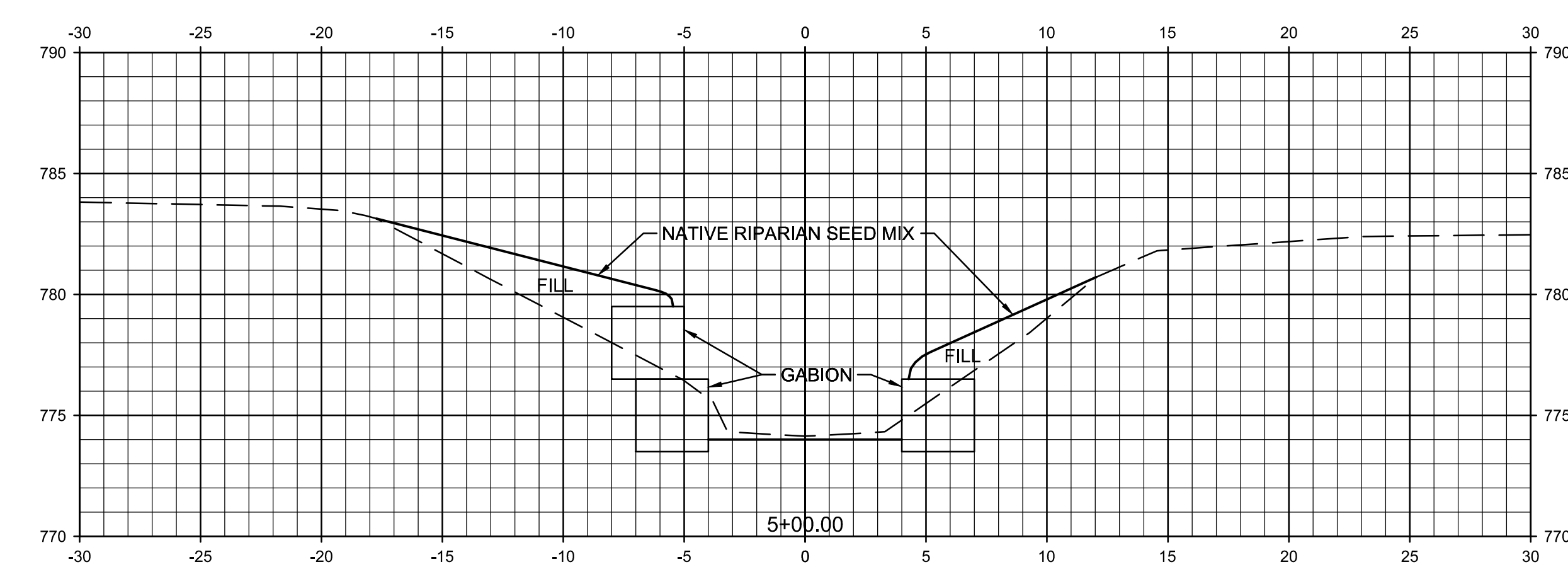
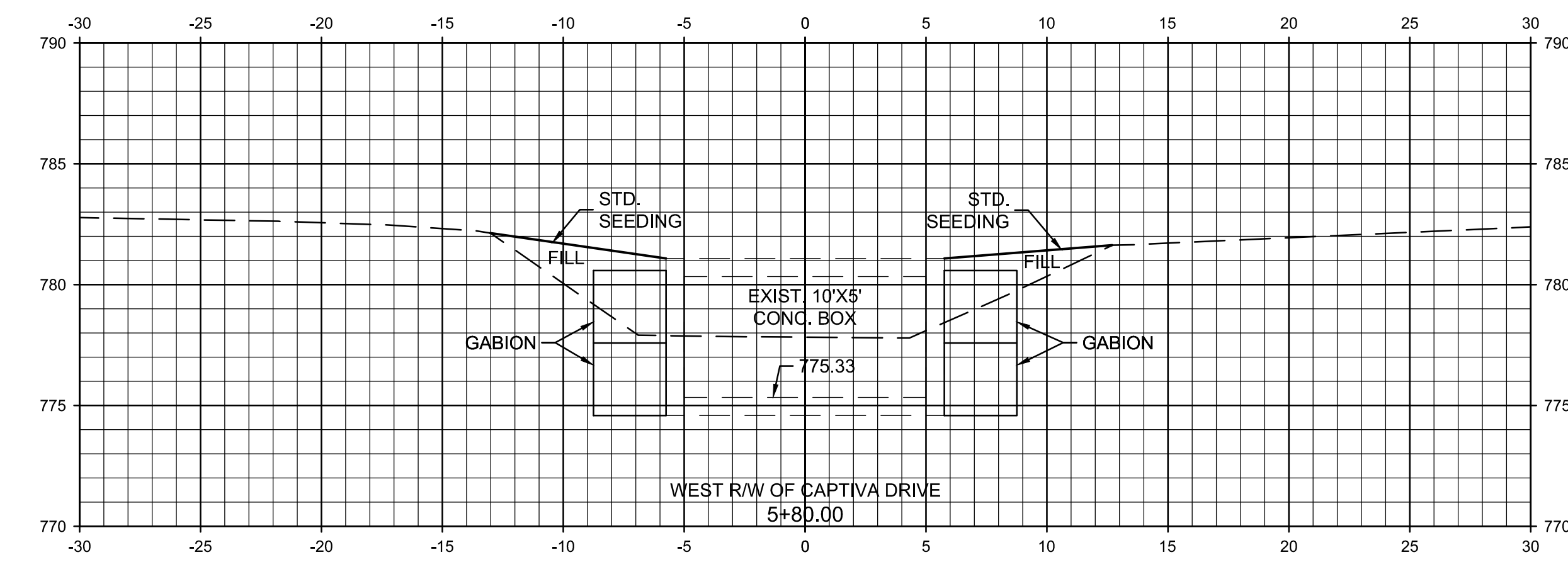


SANIBEL ACRES ADD.
CUT/FILL QUANTITIES
(STA. 2+54 TO STA. 5+80)

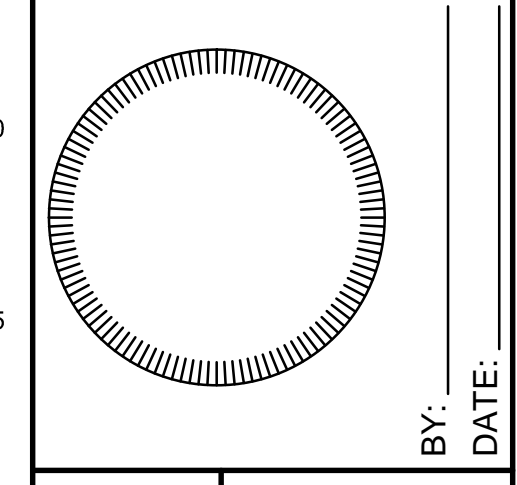
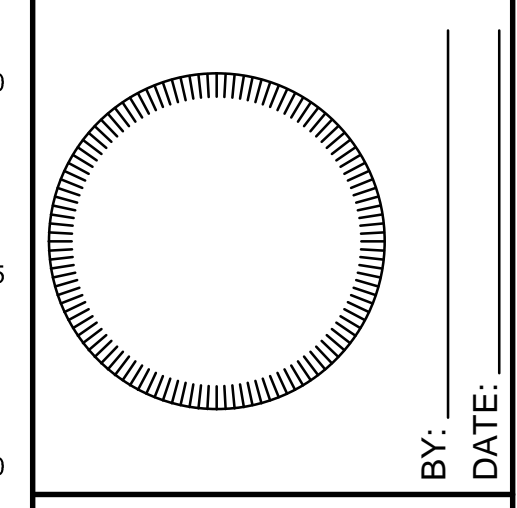
CUT:
EXIST. RIP-RAP: - 11 CY
EXIST. SOIL: - 225 CY
TOTAL CUT: 236 CY

FILL:
PROP. GABION: - 292 CY
PROP. RIP-RAP: - 8 CY
PROP. SOIL: - 55 CY
TOTAL FILL: 355 CY

CROSS SECTIONS SCALES:
1"=5" HOR.
1"=5" VERT.



PLANS PREPARED BY:
FORT WAYNE
CITY UTILITIES ENGINEERING
CITIZENS SQUARE
200 E. BERRY ST., STE 250
FORT WAYNE, IN 46802



PROJECT NAME
CAN BE MULTIPLE LINES
(PROJECT LIMITS)

PREPARED FOR:
FORT WAYNE
CITY UTILITIES ENGINEERING
CITIZENS SQUARE
200 E. BERRY ST., STE 250
FORT WAYNE, IN 46802

**30% PLANS
NOT FOR
CONSTRUCTION**

REVISION NOTES	REVISION NOTES	REVISION NOTES	REVISION NOTES	REVISION NOTES	REVISION NOTES
12/31/13	12/31/13	12/31/13	12/31/13	12/31/13	12/31/13
1	2	3	4	5	6

W.O. NO: #####
DWG NO: ##-#####
SURVEYED BY:
SURVEYOR NAME
DRAWN BY:
CADD TECH NAME
DESIGNED BY:
DESIGNER NAME
CHECKED BY:
CHECKED BY NAME
APPROVED BY:
APPROVED BY NAME
DATE: 8/18/14

SHEET TITLE:
**EXHIBIT CADD5-3
CROSS SECTIONS**
C-301-12
SHEET 14 OF 17