

Lift Station Site Plan Legend

REQUIRED LIFT STATION ITEMS

- ① Wet Well
- ② Valve Vault
- ③ By-Pass Pumping Connection
- ④ Power/Control Panel w/ Concrete Pad
- ⑤ Stone Drive Area
- ⑥ Force Main
- ⑦ Drain Line
- ⑧ Telemetry (See Note 6)

OPTIONAL LIFT STATION ITEMS THAT MAY BE REQUIRED BY C.U.E.

- Ⓐ Fencing
- Ⓑ Gates
- Ⓒ Metering Pit/Metering Piping
- Ⓓ On-Site Generator & Concrete Pad
- Ⓔ Chemical Tank

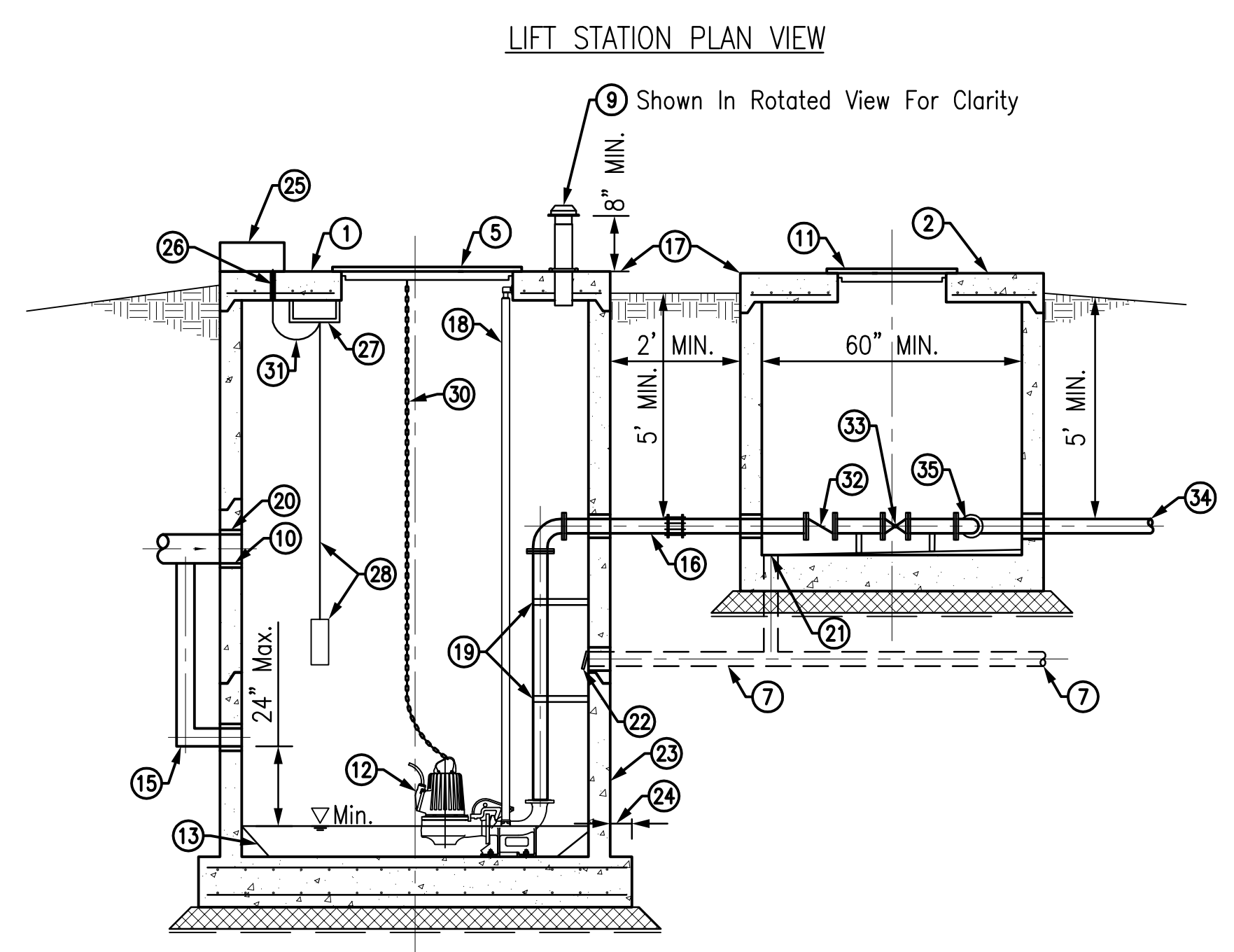
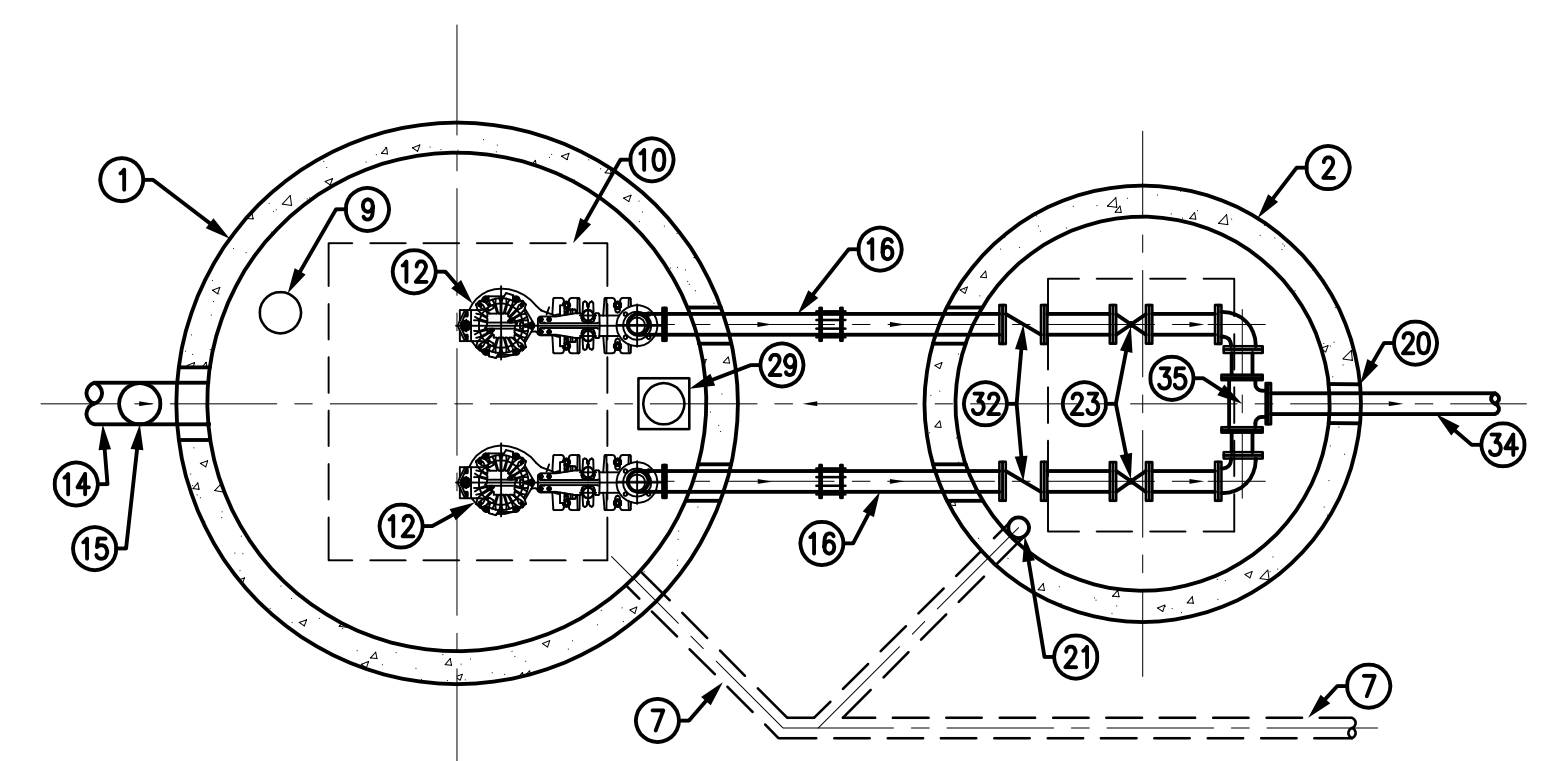
GENERAL NOTES:

1. All Electrical Lines To Be In PVC Conduit When Under Stone Or Asphalt
2. Maintain Drainage Around Site & Minimum 2.0% Slope On Stone Drive
3. Maintain 24-Inches Between All Structures, Slabs & Fencing
4. All Piping, Structure Excavation & Trenches Shall Be Backfilled With An Approved Structural Backfill.
5. Coat Interior Of Wet Well With Approved Coating Material.
6. Telemetry Is Required For All Lift Stations. Size, Type And Location Of Antenna Or Need For Concrete Pad And Tower Are To Be Determined By Propagation Study.

Lift Station Plan & Elevation Legend

LEGEND

- ① Wet Well
- ② Valve Vault, Min. 60" Dia.
- ⑦ Drain Pipe, Maintain Minimum Slope Of 1/4"/FT Into Wet Well
- ⑨ Green or Goose Neck Vent
- ⑩ Hatch, Stainless Steel w/ Dual Safety Gate
- ⑪ Hatch, Stainless Steel
- ⑫ Submersible Pump
- ⑬ Concrete Fillets
- ⑭ Influent Line Invert (High Level Alarm On)
- ⑮ Drop Connection, Encased In Concrete
- ⑯ Force Main, Ductile Iron Restrained Joints
- ⑰ Top Of Structure, Min. 6", Max. 12" Above Finish Grade
- ⑱ Stainless Steel Guide Rail
- ⑲ Intermediate Guide Bars Bracket (Req'd Over 20')
- ⑳ Seal Opening w/ Press Seal or Link Seal (Typical Of All Pipe Penetrations)
- ㉑ Floor Drain w/ P-Trap; Grout Floor w/ Slope To Drain
- ㉒ Backflow Preventer/Duckbill
- ㉓ Monolithic Base
- ㉔ Anti-Flotation Extensions (As Req'd)
- ㉕ Junction Box, NEMA 7
- ㉖ Explosion Proof Sealed Conduit To Control Panel
- ㉗ Cable Hanger
- ㉘ Level Transducer w/ Float Stick as Back-up
- ㉙ Hoist Socket, Locate Above Pumps
- ㉚ Stainless Steel Lifting Cable
- ㉛ Separate Conduits For Each Pump
- ㉜ Ball Check Valve w/ External Lever & Weight w/ Bronze Face
- ㉝ Shut-off Plug Valve, Dezurik Type w/ Square Nut & Handle
- ㉞ Force Main Transition Fitting From Ductile Iron To Alternate Material (PVC, HDPE, etc.)
- ㉟ Restrained Tee & Elbow; Pressure Gauge on Tee



Fort Wayne City Utilities Design Standards Manual

Exhibit SA8-1 Lift Station Details Created: April 25, 2013 Scale: N.T.S.

Revised: