



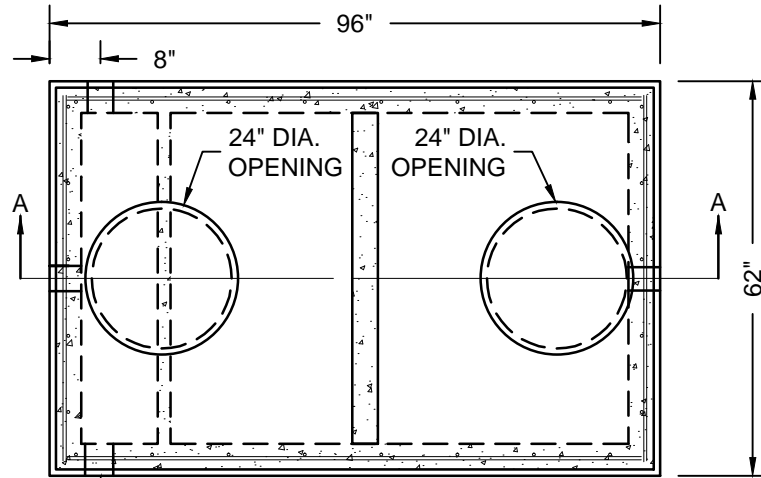
1000 GALLON HEAVY DUTY GREASE INTERCEPTOR

Created: September 6, 2011

Revised: May 19, 2015

Scale: N.T.S.

Approved: May 19, 2015



TOP VIEW

ALTERNATE 4" INLET
KNOCKOUTS IN PALCES

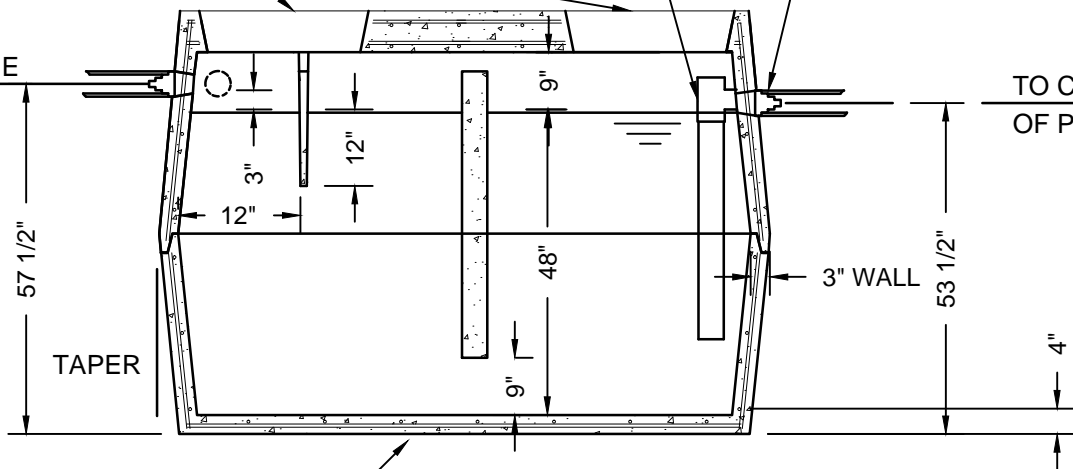
1 1/2", 2", 3", 4", 6"
PSX Gasket Boot

4" PVC PIPE Baffle
EXTRA, INSTALLED
BY CONTRACTOR

24" DIA. OPENING

TO CENTER LINE
OF PSX BOOT

TO CENTER LI
OF PSX BOOT



SECTION A-A

TANK WEIGHT = 8,230#

#4 REINFORCING STEEL AT 12"
ON CENTER ONE WAY & #3 AT
12" ON CENTER ONE WAY TIED TO
6"X6" W2.9/W2.9 WELDED WIRE MESH

NOTES:

1. OPTIONAL TANK RISERS SHOULD BE ORDERED TO GRADE.
2. MINIMUM 4500 PSI AT 28 DAYS CONCRETE.
3. REINFORCING BARS SHALL CONFORM TO ASTM A-615 GRADE 60 STEEL.
4. ALL REINFORCING BARS SHALL BE CUT AND FORMED TO THE DIMENSIONAL TOLERANCES SPECIFIED IN ACI-315 OR ACI-318 EXCEPT WHERE NOTED ON DRAWINGS.
5. ALL BARS SHALL BE BENT COLD. BARS WITH KINKS AND BENDS NOT INDICATED SHALL NOT BE USED. HEATING AND REBENDING OF BARS IS NOT PERMITTED.
6. REINFORCING STEEL SHALL BE #4 REBAR AT 12" O.C. BOTH WAYS TIED TO 6X6 10/10 WELDED WIRE MESH. TOP OF GREASE TRAP TO HAVE DOUBLE LAYER OF STEEL.
7. EARTH COVER: 2'-0" MINIMUM UP TO 5'-0" MAXIMUM. SIZE PAD ACCORDING TO AMOUNT OF EARTH COVER.